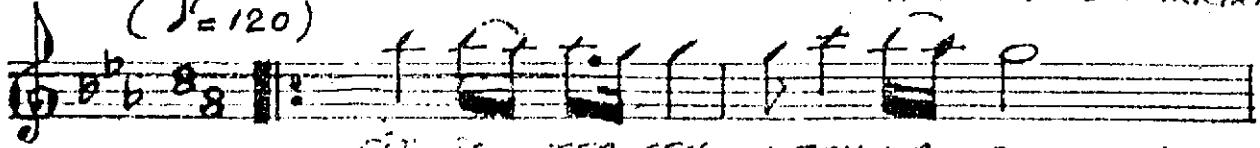


KÜRDİLİHİCAZKÂR  
 "GİT İSTERSEN UZAKLARA İÇİMDE SİN NASIL OLSA"

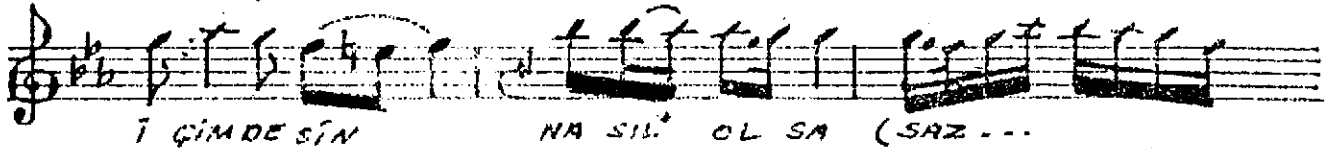
"SÖZ = FAZİLET İŞTAYAN  
 MÜZİK = İSMAIL DEMİRKİRA"

DÜVEK

(♩ = 120)

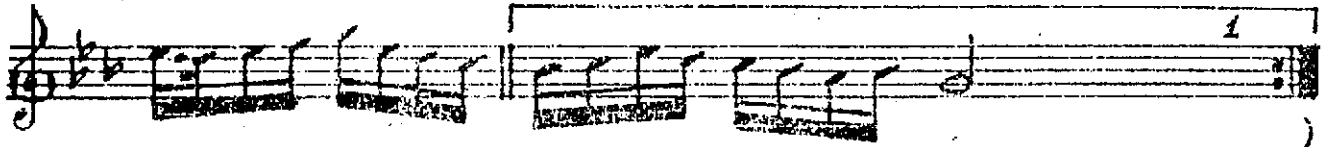


GİT İS TER SEN U ZAK LA RA



İ ÇİM DE SİN

NA SIL OL SA (SAZ ...)

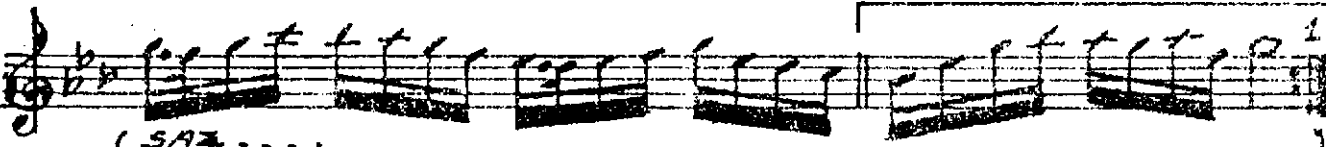


SAL KAL Bİ Mİ A CI LA RA

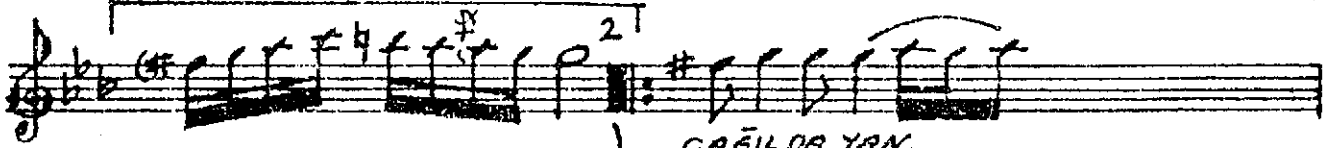


BE NİM LE SİN

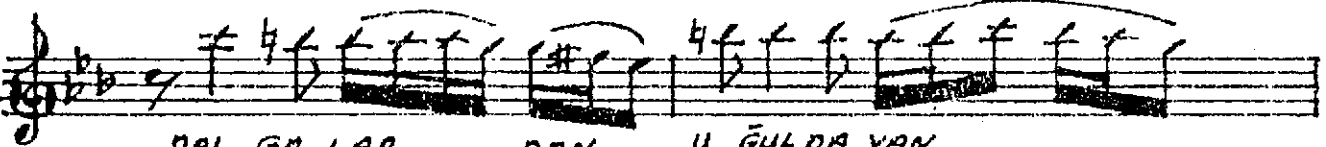
NA SIL OL SA



(SAZ ...)



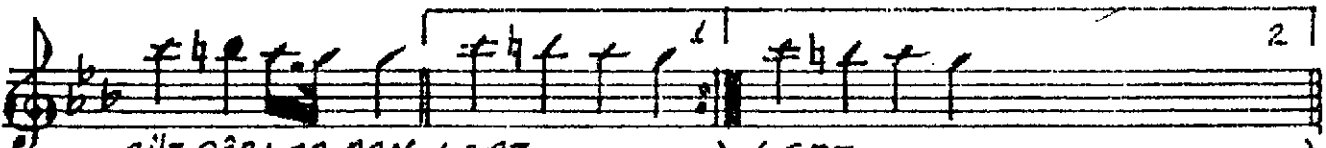
GA BİL DA YAN



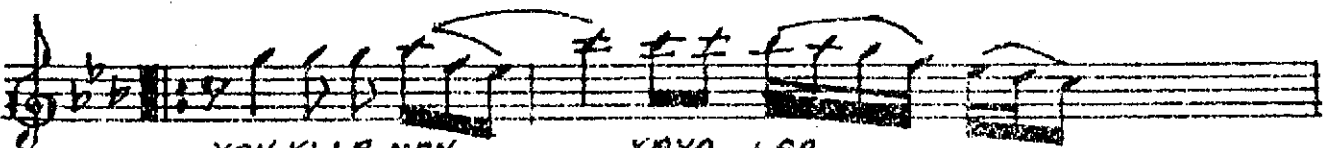
DAL GA LAR

DAN

U ĞÜL DA YAN



RÜZ GÂRLAR DAN (SAZ ...)



YAN KI LA NAN

KAYA LAR

DAN

3-12-1986 - ANA

